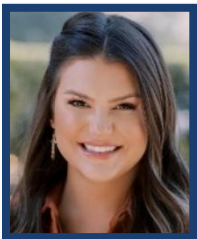
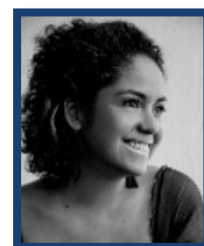


Louisiana PTA sends its gratitude to every student and every PTA that supports the arts within their Local PTA Units with the Reflections Program. We love seeing so much creativity from students of all ages. There are three award levels: 1) **National PTA Entry** is the top award that only goes to one person per Art Category per Grade Division and they progress to the National PTA Reflections Contest; 2) **Award of Excellence**, and 3) **Award of Merit**. All students will receive an award and recognition from Louisiana PTA in late April or May when LAPTA travels to the PTAs to deliver the awards. The judging is done blind by professionals in each category. LAPTA deeply appreciates the time they took to review and judge every entry. Let's meet this year's judges!



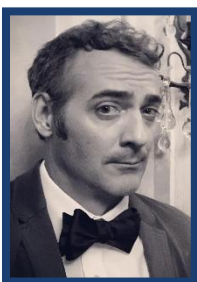
The Dance Choreography judge was Ms. Cristen Quick. Her journey began as a young dancer and continued through junior high, high school, and college, where she competed on the national stage as a member of the LSU Tiger Girls and the University of Memphis Pom Dance Team. Following her competitive career, she then expanded her passion for dance into education and choreography, sharing her expertise with the next generation.

The Film Production judge was Ms. Jessica Montalvo. She is an educator at Salmen High School in Slidell, LA with over 15 years of experience in Visual Arts and holds a Bachelor of Arts degree in Digital Film Production from Grand Canyon University. Currently, Jessica serves as a Career Coach in secondary education, leveraging her expertise to support students in their academic and professional pursuits.



The Literature judge was Miss Laura Smith. She is in her 16th year of teaching English Language Arts to Gifted 7th and 8th graders at Madisonville Junior High and was awarded the Teacher of the Year of her school in 2020. Miss Smith is an ardent supporter of her students' writing and enjoys reading and traveling. Her passion in life is to see her students give their best efforts, grow, and be happy in and outside the classroom.

The Music Composition judge was Mr. Mel Rogers. Prior to retiring from STPSB in 2021, Mel Rogers taught Talented Music at Covington High. He has been a professional musician since the age of 14 and regularly performs in theater orchestras at the Saenger Theater, Jefferson Performing Arts, Tulane Summer Lyric, NOCCA, and other venues. He recently assembled a 30-piece orchestra to back up The Who when they performed at Jazz Fest.



The Photography judge was Mr. Chris Granger. He is an award-winning photojournalist based in New Orleans for the past 25+ years with his work appearing in many publications, magazines, and books. Granger was part of the team covering Hurricane Katrina's aftermath for The Times-Picayune | NOLA.com, resulting in two Pulitzer Prizes for the newspaper. His photography has earned top awards from the Associated Press Media Editors (APME) and the National Press Photographers Association (NPPA).

The Visual Arts judge was Mrs. Gretchen Armbruster. She opened her fine art school and studio in Covington where she teaches classes in all mediums, with a special focus on oils. She studied at LSU, the John McCrady School of Fine and Applied Arts, and the New Orleans Art Institute. She is known for her dramatic use of light and contrast of values in a painting with her original artwork found in many hospitals, businesses, and homes.



And the winners are....

Dance Choreography

National PTA Entry (1st Place)

| Student Name | Title of Work | Local PTA Unit Name | Grade Division |
|------------------|-----------------------------|------------------------------|----------------------------|
| Sanjukta Reddy | Imperfectly Imperfect | Tchefuncte Middle School PTA | Intermediate (Gr 3 – 5) |
| Avika Khandelwal | Stronger Through the Cracks | Caddo Middle Magnet PTSA | Middle (Gr 6 – 8) |

Award of Excellence

| Student Name | Title of Work | Local PTA Unit Name | Grade Division |
|-------------------|-----------------------------|---------------------------------|----------------------------|
| Vianka Khandelwal | The Freedom of Imperfection | South Highlands Elem Magnet PTA | Intermediate (Gr 3 – 5) |
| Kinzley McNeese | The Struggle from Within | Bonne Ecole Elem PTA | Middle (Gr 6 – 8) |
| Edith Bovet | Embracing Limits | Gayle Sloan Middle School PTA | |

Award of Merit

| Student Name | Title of Work | Local PTA Unit Name | Grade Division |
|--------------|--------------------|---------------------|----------------------------|
| Ellie Curry | Wickedly Imperfect | Woodlake Elem PTA | Primary (Pre-K – Gr 2) |
| Aria Raphael | ACCEPTING Myself | Woodlake Elem PTA | Intermediate (Gr 3 – 5) |

Film Production

National PTA Entry (1st Place)

| Student Name | Title of Work | Local PTA Unit Name | Grade Division |
|---------------|--|---------------------------------|----------------------------|
| Grayson Bruce | Some of our greatest treasures we place in museums, others we take for walks | South Highlands Elem Magnet PTA | Intermediate (Gr 3 – 5) |

Award of Excellence

| Student Name | Title of Work | Local PTA Unit Name | Grade Division |
|--------------|----------------------------|---------------------------------|----------------------------|
| Wilds Kacos | Not Every Game Is the Same | South Highlands Elem Magnet PTA | Intermediate (Gr 3 – 5) |

Award of Merit

| Student Name | Title of Work | Local PTA Unit Name | Grade Division |
|---------------------|------------------------------------|---------------------------------|----------------------------|
| Sarah Kathryn Lewis | The Spelling Bee Queen | Fairfield Elementary Magnet PTA | Intermediate (Gr 3 – 5) |
| Mia Bunton | Nature's Examples of Imperfections | South Highlands Elem Magnet PTA | |

Literature

National PTA Entry (1st Place)

| Student Name | Title of Work | Local PTA Unit Name | Grade Division |
|--------------------|------------------------------------|---------------------------------|----------------------------|
| William Patton | Always Trying | South Highlands Elem Magnet PTA | Primary (Pre-K – Gr 2) |
| Sai Diya Iskapalli | The Imperfections of Nature | South Highlands Elem Magnet PTA | Intermediate (Gr 3 – 5) |
| Belle St. Amant | Finding Acceptance in Imperfection | Caddo Middle Magnet PTSA | Middle (Gr 6 – 8) |
| Rachel Evans | The Scarlet B | Caddo Parish Magnet High PTSA | High (Gr 9 – 12) |

Award of Excellence

| Student Name | Title of Work | Local PTA Unit Name | Grade Division |
|-----------------------|--|--|----------------------------|
| Paxton Britt | Accepting My Imperfections | South Highlands Elem Magnet PTA | Primary (Pre-K – Gr 2) |
| Nithya Katikaneni | The Broken Pot | South Highlands Elem Magnet PTA | |
| Luke McAllister | The Adventure Through Space | Bonne Ecole Elem PTA | |
| Oliver Carpenter | Imperfection | Lake Harbor Middle School PTA | Intermediate (Gr 3 – 5) |
| Aanya Abro | Imperfect Harmony | South Highlands Elem Magnet PTA | |
| Stella Bai | Facing Fears and Accepting Imperfections | Eden Gardens Fundamental Elem Magnet PTA | |
| Anja Lappinen | Accepting Imperfections | Lake Harbor Middle School PTA | |
| Isaac Pounds | Imperfection | Gayle Sloan Middle School PTA | |
| Isla Brigitte Buisson | Doe's Decision | Gayle Sloan Middle School PTA | |
| Hallie Sciortino | Did You Know? | Woodlake Elem PTA | |
| Brett Elyse Rotolo | Gracie's Life Lesson | Tchefuncte Middle School PTA | Middle (Gr 6 – 8) |
| Charlize Lappinen | Perfect in Many Ways | Lake Harbor Middle School PTA | |
| Liam Lighthall | The Process | Tchefuncte Middle School PTA | |
| Samantha Chirart | To my Imperfect Love | Caddo Parish Magnet High PTSA | High (Gr 9 – 12) |
| Levi Ezell | Homebound | Caddo Parish Magnet High PTSA | |
| Savannah Ardoin | Girl in the Mirror | C. E. Byrd High School PTSA | |

Literature (Continued)

Award of Merit

| Student Name | Title of Work | Local PTA Unit Name | Grade Division |
|----------------------|------------------------------|-------------------------------|----------------------------|
| John Mayton Williams | Running Club | Fairfield Elem Magnet PTA | Primary (Pre-K – Gr 2) |
| Camille Burt | The Little Vampire | Lake Harbor Middle School PTA | Intermediate (Gr 3 – 5) |
| Mollie Harrell | The Cats of Flower Boulevard | Lake Harbor Middle School PTA | |
| Odin Wetzel | Accepting Imperfection | Tchefuncte Middle School PTA | |
| Siri Malireddy | Mistakes | Fairfield Elem Magnet PTA | |
| Nicolette Jones | The Golden Eyed Girl | Magnolia Trace Elem PTA | |
| Taylor Colvin | Boville Soccer | Tchefuncte Middle School PTA | |
| Iris Bathels | Beautiful | Fontainebleau Junior High PTA | Middle (Gr 6 – 8) |
| Luke Swenson | A Take of 5 Cats | Lake Harbor Middle School PTA | |
| Reese Barnett | Accept You | C. E. Byrd High School PTSA | High (Gr 9 – 12) |

Music Composition

National PTA Entry (1st Place)

| Student Name | Title of Work | Local PTA Unit Name | Grade Division |
|---------------|---------------------------|-------------------------------|---------------------------|
| Isabella Phan | Perfectly Imperfect | Magnolia Trace Elem PTA | Primary (Pre-K – Gr 2) |
| Kadan Phan | Not perfect, but I'm Fine | Fontainebleau Junior High PTA | Middle (Gr 6 – 8) |

Award of Excellence

| Student Name | Title of Work | Local PTA Unit Name | Grade Division |
|--------------|------------------------|---------------------|---------------------------|
| Callie Glynn | Trying is the Fun Part | Woodlake Elem PTA | Primary (Pre-K – Gr 2) |

Award of Merit

| Student Name | Title of Work | Local PTA Unit Name | Grade Division |
|-------------------|------------------------|----------------------|----------------------------|
| Veronica L. Knock | Accepting Imperfection | Bonne Ecole Elem PTA | Intermediate (Gr 3 – 5) |

Photography

National PTA Entry (1st Place)

| Student Name | Title of Work | Local PTA Unit Name | Grade Division |
|---------------|--------------------------------|---------------------------------|----------------------------|
| Gianni Lobre | The Brave Tree | Woodlake Elem PTA | Primary (Pre-K – Gr 2) |
| Stella Dong | Perfection in the Imperfection | South Highlands Elem Magnet PTA | Intermediate (Gr 3 – 5) |
| Shaan Patel | My Hypochromia | Tchefuncte Middle School PTA | Middle (Gr 6 – 8) |
| Maya Trutschl | Flawed Perfection | Caddo Parish Magnet High PTSA | High (9 – 12) |

Award of Excellence

| Student Name | Title of Work | Local PTA Unit Name | Grade Division |
|----------------------|------------------------------|---------------------------------|----------------------------|
| John Mayton Williams | Feel Good Flowers | Fairfield Elem Magnet PTA | Primary (Pre-K – Gr 2) |
| Sanjukta Reddy | Beauty Beyond the Blur | Tchefuncte Middle School PTA | Intermediate (Gr 3 – 5) |
| Sarah Kathryn Lewis | Brace Face | Fairfield Elem Magnet PTA | |
| Wes Phares | Beauty Beneath the Bark | Tchefuncte Middle School PTA | |
| Rishi Katikaneni | Stony Nature | South Highlands Elem Magnet PTA | |
| Sophie Abro | America – Imperfect Yet Ours | Caddo Middle Magnet PTSA | Middle (Gr 6 – 8) |
| John Hunter | Lucky's Life Lessons | C. E. Byrd High School PTSA | High (Gr 9 – 12) |

Award of Merit

| Student Name | Title of Work | Local PTA Unit Name | Grade Division |
|--------------------|----------------------------------|---------------------------------|----------------------------|
| Thomas West | The Perfect Tree | Woodlake Elem PTA | Primary (Pre-K – Gr 2) |
| Kathleen Heck | Blue Flower Blanket | Fairfield Elem Magnet PTA | |
| Kiran Jaganmohan | Accepting Imperfection in Nature | South Highlands Elem Magnet PTA | Intermediate (Gr 3 – 5) |
| Duke LeBlanc | Practice Makes Perfect | Tchefuncte Middle School PTA | |
| Everly Thibault | Imperfect Inspiring! | Magnolia Trace Elem PTA | |
| Nicholas Henderson | Missed Opportunity | C. E. Byrd High School PTSA | High (Gr 9 – 12) |

Visual Arts

National PTA Entry (1st Place)

| Student Name | Title of Work | Local PTA Unit Name | Grade Division |
|------------------|--|--|----------------------------|
| Myra Grace Singh | My Imperfections, My Identity | Eden Gardens Fundamental Elem Magnet PTA | Primary (Pre-K – Gr 2) |
| Stella Dong | Finding Value in the Unusual | South Highlands Elem Magnet PTA | Intermediate (Gr 3 – 5) |
| Avika Khandelwal | Wrinkles and Roots: A Tapestry of Imperfection | Caddo Middle Magnet PTSA | Middle (Gr 6 – 8) |
| Fahmieh Shalaby | It's Hard to be Perfect | Captain Shreve High School PTSA | High (Gr 9 – 12) |

Award of Excellence

| Student Name | Title of Work | Local PTA Unit Name | Grade Division |
|-------------------|---------------------|---------------------------------|----------------------------|
| Amilyah Cardriche | Perfectly Imperfect | Woodlake Elem PTA | Primary (Pre-K – Gr 2) |
| Mariana Efferson | Tree Life | Woodlake Elem PTA | |
| Jillian Poynter | Beauty | Gayle Sloan Middle School PTA | Intermediate (Gr 3 – 5) |
| Aanya Abro | Imperfect Harmony | South Highlands Elem Magnet PTA | |

Award of Merit

| Student Name | Title of Work | Local PTA Unit Name | Grade Division |
|----------------|-----------------------------|---------------------------------|----------------------------|
| Leigh Israel | Artist | South Highlands Elem Magnet PTA | Primary (Pre-K – Gr 2) |
| Rebecca Bomfim | Butterfly Heart | Woodlake Elem PTA | |
| Audrey Curry | Perfection Isn't Everything | Gayle Sloan Middle School PTA | Intermediate (Gr 3 – 5) |
| Lawson Turner | The Tree Dude | Tchefuncte Middle School PTA | |
| Lena Gardner | A Different Kind of Beauty | Magnolia Trace Elem PTA | |
| Garren Sudds | Accepting Imperfections | Captain Shreve High School PTSA | High (Gr 9 – 12) |

LAPTA 2024-25 Reflections Winners by PTA

| Local PTA Unit Name | Category | Student Name | Award |
|---------------------------------|-------------|-----------------------|--|
| Bonne Ecole Elem PTA | Dance | Kinzley McNeese | Award of Excellence |
| | Literature | Luke McAllister | Award of Excellence |
| | Music | Veronica L. Knock | Award of Merit |
| C. E. Byrd High School PTSA | Literature | Savannah Ardoin | Award of Excellence |
| | Literature | Reese Barnett | Award of Merit |
| | Photography | John Hunter | Award of Excellence |
| | Photography | Nicholas Henderson | Award of Merit |
| | Dance | Avika Khandelwal | National PTA Entry (1 st Place) |
| Caddo Middle Magnet PTSA | Literature | Belle St. Amant | National PTA Entry (1 st Place) |
| | Photography | Sophie Abro | Award of Excellence |
| | Visual Arts | Avika Khandelwal | National PTA Entry (1 st Place) |
| Caddo Parish Magnet High PTSA | Literature | Rachel Evans | National PTA Entry (1 st Place) |
| | Literature | Samantha Chirart | Award of Excellence |
| | Literature | Levi Ezell | Award of Excellence |
| | Photography | Maya Trutschl | National PTA Entry (1 st Place) |
| Captain Shreve High School PTSA | Visual Arts | Fahmieh Shalaby | National PTA Entry (1 st Place) |
| | Visual Arts | Garren Suds | Award of Merit |
| Eden Gardens Fund Elem Magn PTA | Literature | Stella Bai | Award of Excellence |
| | Visual Arts | Myra Grace Singh | National PTA Entry (1 st Place) |
| Fairfield Elem Magnet PTA | Film | Sarah Kathryn Lewis | Award of Merit |
| | Literature | John Mayton Williams | Award of Merit |
| | Literature | Siri Malireddy | Award of Merit |
| | Photography | John Mayton Williams | Award of Excellence |
| | Photography | Sarah Kathryn Lewis | Award of Excellence |
| | Photography | Kathleen Heck | Award of Merit |
| Fontainebleau Junior High PTA | Literature | Iris Bathels | Award of Merit |
| | Music | Kadan Phan | National PTA Entry (1 st Place) |
| Gayle Sloan Middle School PTA | Dance | Edith Bovet | Award of Excellence |
| | Literature | Isaac Pounds | Award of Excellence |
| | Literature | Isla Brigitte Buisson | Award of Excellence |
| | Visual Arts | Jillian Poynter | Award of Excellence |
| | Visual Arts | Audrey Curry | Award of Merit |
| Lake Harbor Middle School PTA | Literature | Oliver Carpenter | Award of Excellence |
| | Literature | Anja Lappinen | Award of Excellence |
| | Literature | Charlize Lappinen | Award of Excellence |
| | Literature | Camille Burt | Award of Merit |
| | Literature | Mollie Harrell | Award of Merit |
| | Literature | Luke Swenson | Award of Merit |
| Magnolia Trace Elem PTA | Literature | Nicolette Jones | Award of Merit |
| | Music | Isabella Phan | National PTA Entry (1 st Place) |
| | Photography | Everly Thibault | Award of Merit |
| | Visual Arts | Lena Gardner | Award of Merit |

LAPTA 2024-25 Reflections Winners by PTA

| Local PTA Unit Name | Category | Student Name | Award |
|---------------------------------|-------------|--------------------|--|
| South Highlands Elem Magnet PTA | Dance | Vianka Khandelwal | Award of Excellence |
| | Film | Grayson Bruce | National PTA Entry (1 st Place) |
| | Film | Wilds Kacos | Award of Excellence |
| | Film | Mia Bunton | Award of Merit |
| | Literature | William Patton | National PTA Entry (1 st Place) |
| | Literature | Sai Diya Iskapalli | National PTA Entry (1 st Place) |
| | Literature | Paxton Britt | Award of Excellence |
| | Literature | Nithya Katikaneni | Award of Excellence |
| | Literature | Aanya Abro | Award of Excellence |
| | Photography | Stella Dong | National PTA Entry (1 st Place) |
| | Photography | Rishi Katikaneni | Award of Excellence |
| | Photography | Kiran Jaganmohan | Award of Merit |
| | Visual Arts | Stella Dong | National PTA Entry (1 st Place) |
| | Visual Arts | Aanya Abro | Award of Excellence |
| | Visual Arts | Leigh Israel | Award of Merit |
| Tchefuncte Middle School PTA | Dance | Sanjukta Reddy | National PTA Entry (1 st Place) |
| | Literature | Brett Elyse Rotolo | Award of Excellence |
| | Literature | Liam Lighthall | Award of Excellence |
| | Literature | Odin Wetzel | Award of Merit |
| | Literature | Taylor Colvin | Award of Merit |
| | Photography | Shaan Patel | National PTA Entry (1 st Place) |
| | Photography | Sanjukta Reddy | Award of Excellence |
| | Photography | Wes Phares | Award of Excellence |
| | Photography | Duke LeBlanc | Award of Merit |
| | Visual Arts | Lawson Turner | Award of Merit |
| Woodlake Elem PTA | Dance | Ellie Curry | Award of Merit |
| | Dance | Aria Raphael | Award of Merit |
| | Literature | Hallie Sciortino | Award of Excellence |
| | Music | Callie Glynn | Award of Excellence |
| | Photography | Gianni Lobre | National PTA Entry (1 st Place) |
| | Photography | Thomas West | Award of Merit |
| | Visual Arts | Amilyah Cardriche | Award of Excellence |
| | Visual Arts | Mariana Efferson | Award of Excellence |
| | Visual Arts | Rebecca Bomfim | Award of Merit |