

PTA Leadership Training

2024-25 Reflections Program

2024-24 Theme: Accepting Imperfection



LouisianaPTA.org/reflections



This Photo by Unknown Author is licensed under CC BY-SA-NC

**Why are we here?
Mission:**

To make every child's potential a reality by engaging and empowering families and communities to advocate for all children.



LouisianaPTA.org/reflections

Reflections Has Two Contests

1. Theme Search: the theme in two years
2. Reflections Program: Call for art entries in six categories divided into four grade divisions plus Accessible Arts division.

**2024-25 Theme:
Accepting Imperfection**

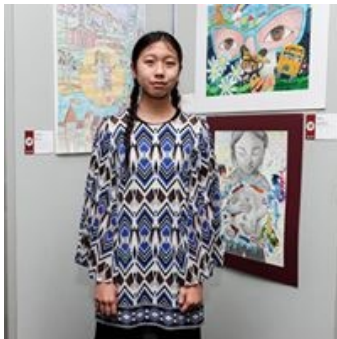


LouisianaPTA.org/reflections

Local Reflections Chair Duties

Local PTAs should run their Reflections program according to their state's requirements. General Local Reflections leader tasks include:

- Registering your Local PTA and connect with your state's Reflections program at LouisianaPTA.org/reflections
- Editing and distributing program materials
- Recruiting volunteer judges
- Collecting entries and coordinating the art review process
- Advancing finalists to the LAPTA round
- Celebrating and recognizing students



LouisianaPTA.org/reflections

Reflections Program Theme Search

Inspire hundreds of thousands of student artists each year

The Reflections program theme is **student-selected** and changes annually.

Students submit their themes in the **Annual Theme Search Contest** according to their State PTA and National PTA's Reflections theme search guidelines. **One national winner** is selected by the National PTA in February.

The winner's theme **inspires students across the country and in U.S. schools overseas** that participate in the Reflections program. The winning student will also receive a \$100 award and national recognition.

LAPTA hosts the Theme Search with all information at LouisianaPTA.org/contests.



LouisianaPTA.org/reflections

1. Register, Promote, Recruit

- ❑ Register with LAPTA: <https://form.jotform.com/222285804619056>
- ❑ Promote Reflections by Celebrating
 - ❖ National Arts in Education Week - beginning the second Sunday in September
 - ❖ National Arts and Humanities Month – October
 - ❖ National PTA works alongside non-profit partner Americans for the Arts (AFTA) to celebrate arts in education week and arts in education month.
- ❑ Recruit Volunteers for your Reflections Committee and delegate tasks:
 - ❖ Promote Program
 - ❖ Coordinate Judging
 - ❖ Host Celebration Events



LouisianaPTA.org/reflections

Use BAND to Enhance Your Reflections Program

BAND is an all-in-one group communication app that can help make managing your Reflections program easier and more impactful.

Head to PTA.org/Reflections/StartYourProgram to find the "BAND and Your Reflections Program" resource and learn about the many features BAND has to offer, including file sharing, chat rooms and posts.



LouisianaPTA.org/reflections

Step 2. Customize and Distribute

Edit program materials to include

- ✓ Available arts categories for participation
- ✓ Program deadlines
- ✓ Directions for submitting entries

Distribute to program participants

- ✓ Student Entry Forms
- ✓ Category Rules

Include additional details in the student materials like:

- ✓ Contact information
- ✓ Packaging instructions (e.g., physical vs. digital)
- ✓ Additional rules for student eligibility



LouisianaPTA.org/reflections

Step 2. Customize and Distribute

- The Local PTA decides which categories their students can enter.
- See [Canva.com](https://www.canva.com) for a customizable flyer. Or search “PTA Reflections Flyer with Customizable Categories” on Canva.
- Students will need access to the instructions, guidelines, and entry form.
- See LouisianaPTA.org/reflections for other templates and downloads.
- Students can access forms at LouisianaPTA.org/students.



Learn more and participate in this fun contest!

Deadline for Entries:	PTA Contact for Details & Guidelines:	Join BAND Chat:
Date	PTA Name Contact Name Phone, Email	Create your BAND group and add QR Code to join.



LouisianaPTA.org/reflections

Student Entry Form Pg 1

PTA Reflections Student Submission Entry Form

This section to be completed by PTA before distribution.

LOCAL PTA _____ LOCAL PTA ID _____

LOCAL PROGRAM CHAIR _____ EMAIL _____ PHONE _____

COUNCIL PTA _____ DISTRICT PTA _____ REGION PTA _____

STATE PTA _____

MEMBER DUES PAID DATE _____ INSURANCE PAID DATE _____ BYLAWS APPROVAL DATE _____

STUDENT NAME _____ GRADE _____ AGE _____

PARENT/GUARDIAN NAME(S) _____

EMAIL _____ PHONE _____

MAILING ADDRESS _____

CITY _____ STATE _____ ZIP _____

Ownership in any submission shall remain the property of the entrant, but entry into this program constitutes entrant's irrevocable permission and consent that PTA may display, copy, reproduce, enhance, print, sublicense, publish, distribute and create derivative works for PTA purposes. PTA is not responsible for lost or damaged entries. Submission of entry into the PTA Reflections program constitutes acceptance of all rules and conditions. I agree to the above statement and the National PTA Reflections Official Rules.

STUDENT SIGNATURE (Required.) _____

PARENT/GUARDIAN SIGNATURE (Required.) _____

GRADE DIVISION (Check One)

- PRIMARY (Pre-K-Grade 2)
- INTERMEDIATE (Grades 3-5)
- MIDDLE SCHOOL (Grades 6-8)
- HIGH SCHOOL (Grades 9-12)
- ACCESSIBLE ARTS (All Grades)

ARTS CATEGORY (Check One)

- DANCE CHOREOGRAPHY
- FILM PRODUCTION
- LITERATURE
- MUSIC COMPOSITION
- PHOTOGRAPHY
- VISUAL ARTS

TITLE OF ARTWORK (Required.)

Complete before distribution - >

Student Information - >

Student & Parent Signatures - >

Submission Category & Division - >

Title & Details of Submission - >

Artist Statement - >

Student Entry Form Pg 2


Student Details - >

DETAILS If background music is used in dance/film, citation is required. Include word count for literature. List musician(s) or instrumentation for music. List dimensions for photography/visual arts. Describe technology/platforms used in the creation process, including any generative elements.



Artist Statement - >

ARTIST STATEMENT (Required). In 10 to 100 words, describe your work and how it relates to the theme.

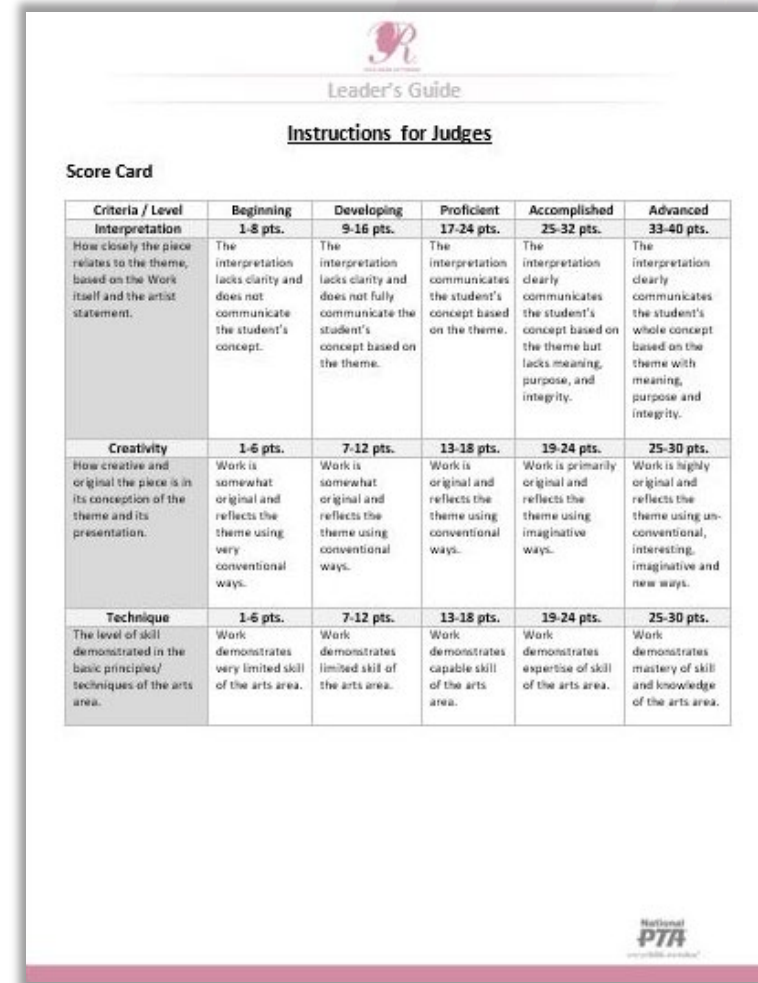


LouisianaPTA.org/reflections
LouisianaPTA.org/students

Step 3. Coordinate Judging

Recruit a **team of experienced arts judges** to review student works. The biggest advice around judge recruitment is to tap into the resources around you:

- Parents with art backgrounds
- Administrators or celebrity judges to increase notoriety for the program
- Local art professionals like art teachers, artists, or art businesses
- Former Reflections supporters
- Students and arts professors from local colleges and universities
- Former Reflections winners



The image shows a document titled "Leader's Guide" with a sub-heading "Instructions for Judges". Below this is a "Score Card" table. The table has five columns representing skill levels: Beginning (1-8 pts), Developing (9-16 pts), Proficient (17-24 pts), Accomplished (25-32 pts), and Advanced (33-40 pts). There are three rows of criteria: Interpretation, Creativity, and Technique. Each cell in the table contains a brief description of what the student's work should demonstrate at that level. The National PTA logo is visible in the bottom right corner of the document.

Criteria / Level	Beginning 1-8 pts.	Developing 9-16 pts.	Proficient 17-24 pts.	Accomplished 25-32 pts.	Advanced 33-40 pts.
Interpretation How closely the piece relates to the theme, based on the Work itself and the artist statement.	The interpretation lacks clarity and does not communicate the student's concept.	The interpretation lacks clarity and does not fully communicate the student's concept based on the theme.	The interpretation communicates the student's concept based on the theme.	The interpretation clearly communicates the student's concept based on the theme but lacks meaning, purpose, and integrity.	The interpretation clearly communicates the student's whole concept based on the theme with meaning, purpose and integrity.
Creativity How creative and original the piece is in its conception of the theme and its presentation.	Work is somewhat original and reflects the theme using very conventional ways.	Work is somewhat original and reflects the theme using conventional ways.	Work is original and reflects the theme using conventional ways.	Work is primarily original and reflects the theme using imaginative ways.	Work is highly original and reflects the theme using unconventional, interesting, imaginative and new ways.
Technique The level of skill demonstrated in the basic principles/ techniques of the arts area.	Work demonstrates very limited skill of the arts area.	Work demonstrates limited skill of the arts area.	Work demonstrates capable skill of the arts area.	Work demonstrates expertise of skill of the arts area.	Work demonstrates mastery of skill and knowledge of the arts area.



LouisianaPTA.org/reflections

Step 3. Coordinate Judging

- LAPTA Deadline: **January 19, 2025**
- Set your deadline to give ample time for judging. Determine how students will submit their entries to you.
- LAPTA will have judges' rubrics available for download.
- You electronically submit 3 winners per category per grade division to LAPTA through the online portal. You might have more than one grade division.

Leader's Guide

Instructions for Judges

Score Card

Criteria / Level	Beginning 1-8 pts.	Developing 9-16 pts.	Proficient 17-24 pts.	Accomplished 25-32 pts.	Advanced 33-40 pts.
Interpretation How closely the piece relates to the theme, based on the Work itself and the artist statement.	The interpretation lacks clarity and does not communicate the student's concept.	The interpretation lacks clarity and does not fully communicate the student's concept based on the theme.	The interpretation communicates the student's concept based on the theme.	The interpretation clearly communicates the student's concept based on the theme but lacks meaning, purpose, and integrity.	The interpretation clearly communicates the student's whole concept based on the theme with meaning, purpose and integrity.
Creativity How creative and original the piece is in its conception of the theme and its presentation.	Work is somewhat original and reflects the theme using very conventional ways.	Work is somewhat original and reflects the theme using conventional ways.	Work is original and reflects the theme using conventional ways.	Work is primarily original and reflects the theme using imaginative ways.	Work is highly original and reflects the theme using unconventional, interesting, imaginative and new ways.
Technique The level of skill demonstrated in the basic principles/ techniques of the arts area.	Work demonstrates very limited skill of the arts area.	Work demonstrates limited skill of the arts area.	Work demonstrates capable skill of the arts area.	Work demonstrates expertise of skill of the arts area.	Work demonstrates mastery of skill and knowledge of the arts area.

National PTA



LouisianaPTA.org/reflections

Step 4. Advancing and Celebrating Your Students

- ❑ Assign awards by category and division.
- ❑ Advance finalists using the online portal to LAPTA by January 19, 2025.
- ❑ Celebrate your students:
 - a) Announce winners on school websites and social media and tag @NationalPTA and **#PTAReflections**
 - b) Offer awards from **ShopPTA.com** and donated prizes from community supporters
 - c) Host a student recognition event for families
 - d) Showcase student works at school and in the community



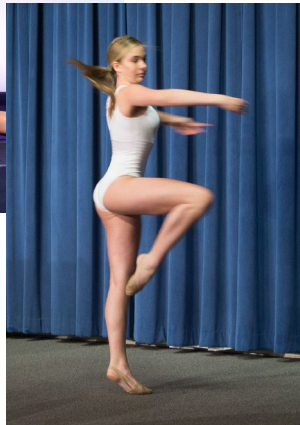
LouisianaPTA.org/reflections

LAPTA Reflections Summary

- Register with LAPTA at <https://form.jotform.com/222285804619056>
- **Arts Categories:** Dance Choreography, Literature, Visual Arts, Film Production, Music Composition, and Photography. You decide which Arts Categories your students can enter.
- **Grade Divisions:** Primary (Pre-K to Grade 2), Intermediate (Grades 3-5), Middle School (Grades 6-8), High School (Grades 9-12), and Accessible Arts (All grades)
- **Submissions:** PTA electronically submits three entries using the online portal from each Arts Category per Grade Division to LAPTA for judging. If your school has more than one Grade Division, you may submit three entries for each of those separate divisions. Portal link to be shared ASAP at LouisianaPTA.org/reflections.
- **LOCAL UNIT ENTRY DEADLINE: January 19, 2025**
- **Winners announced March 3, 2025.** The “National Entries” (1st Place) compete at National PTA Level with their winners announced May 1.
- Local Units must be Actively Affiliated by January 1 for student entries to be accepted.



LouisianaPTA.org/reflections



Dance Choreography

Solo and ensemble works of all dance styles are accepted. Entrant must be the choreographer and may also be the performer, or one of the performers. **If background music is used, cite it on the entry form.**

VIDEO

- File must not exceed 5 min. and 1000MB in size
- Accepted formats: AVI, MOV, and MP4



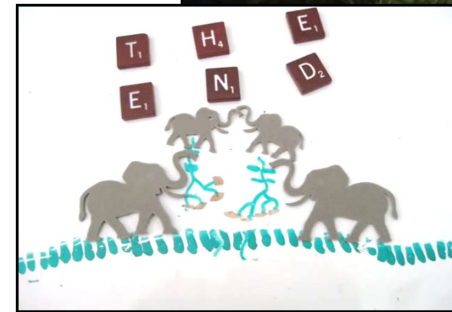


Film Production

Accepted short film styles include animation, narrative, documentary, experimental or media presentation. All screenwriting, directing and editing must be done by the student producer. **If background music is used, cite it on the entry form.**

VIDEO

- Video must not exceed 5 min.
- File must not exceed 1000MB in size
- Accepted formats: AVI, .MOV, and MP4
- Use of PowerPoint is prohibited





Literature

Accepted forms of fiction and nonfiction include prose, poetry, reflective essay, screen play and play script, narrative, and short story. Entrants may write in their primary language if an interpretive English translation is also attached. Use of copyrighted material is prohibited.

WRITING

- Must not exceed 2,000 words
- May be handwritten or typed
- Single-sided print on 8 ½' x 11" paper
- PDF file



LouisianaPTA.org/reflections



Music Composition

All music styles and combinations of instrumentation are accepted. Entrant must be the composer and may also be the performer, or one of the performers. Use of copyrighted material is prohibited.

AUDIO

- File must not exceed 5 min. and 1000MB in size
- Accepted formats: MP3 and WAV

NOTATION

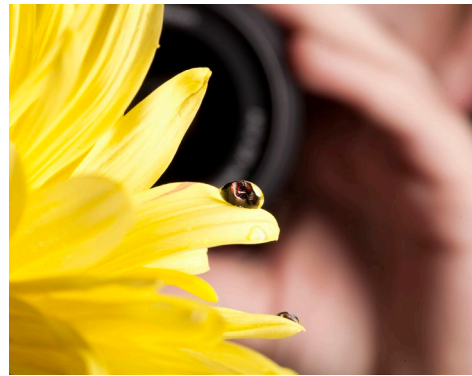
- Only required for middle and high school divisions
- In place of a notated score, a written reflective statement that provides a musically technical explanation of how the piece was composed (100 words or less).
- Notation in PDF format





Photography

Photo must be a single print/digital image. Collages and collections of photos are not accepted. Entrant must be the photographer and may use a variety of digital editing techniques including but not limited to, multiple exposure, negative sandwich and photogram.



PRINT

- Must be no smaller than 3x5 inches and no larger than 8x10 inches
- Accepted print formats: Mounted on mat or poster board no larger than 11x14 inches
- Framed prints are not accepted
- Include one digital image of artwork with your submission (Accepted file formats: JPEG, JPG, PNG)

DIGITAL IMAGE

- Dimensions must be at least 640x960 (pixels) and 300 dpi (resolution)
- Accepted file formats: JPEG, JPG, PNG





Visual Arts

Works of both fine and design arts are accepted, including but not limited to:

architectural drawing and models, ceramics, collage, computer generated images and graphics, crafts, drawing, fashion clothes and jewelry, fiber work, mixed media, painting, printmaking and sculpture.



2D WORKS

- Mounted on sturdy material
- No larger than 24x30 inches with matting
- Framed entries are not accepted
- Include one digital image of artwork with your submission (Accepted file formats: JPEG, JPG, PNG)

3D WORKS

- Include 3 digital images of artwork at different angles. (Accepted file formats: JPEG, JPG, PNG)



LouisianaPTA.org/reflections



Accessible Arts Division

This **Special Artist Division** welcomes students from all grades and offers non-artistic accommodations for students to participate fully in PTA Reflections. **Student recognition and awards are announced as part of the Special Artist Division.**

ACCOMODATIONS

- Non-artistic accommodations (e.g. adaptive technology; transcribing; holding a camera)
- Assistants must refrain from being involved in the artistic process (e.g. developing an artist statement, choreography, music lyrics, storyboards, etc.)

Students who identify as having a disability and may receive services under IDEA or ADA: Section 504 may enter in the Accessible Arts Division OR grade division most closely aligned to their functional abilities.



LouisianaPTA.org/reflections

National PTA Awards and Exhibits



Student Arts Showcase and Exhibit
January

National Winners Announcement
May 1
[PTA.org/Reflections](https://www.pta.org/Reflections)

Celebration Event and Exhibit
Annual National PTA Convention



LouisianaPTA.org/reflections

Don't Forget to Wrap Up!

- Make sure to thank student and parent leaders, school personnel, submission reviewers and community businesses for their support
- Return non-advancing works and contact students who are advancing in the competition
- Host a debrief with your volunteers committee
- Record notes and contacts for next year's Reflections Chair

Questions? Email Reflections@LouisianaPTA.org.



LouisianaPTA.org/reflections